

Floor Master

Contracting and Trading

Prequalification



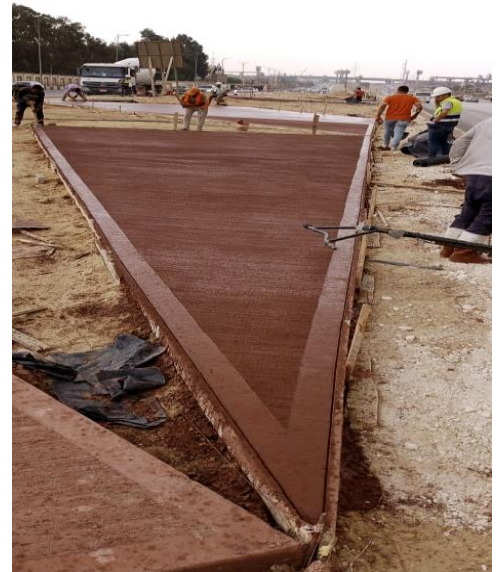
@ floorMastereg.com



Project Name: Future City & Alex Road

Main Contractor: 3S

Scope of Work: Broom Red Concrete



Broom Red Concrete he Broom Red Concrete works have been fully executed as per the approved drawings and project specifications. Concrete was poured, leveled, and finished using the broom finish technique to achieve the required surface texture and slip resistance. Red color additives were applied uniformly to ensure consistent appearance and durability. All works were carried out under proper supervision and in accordance with the approved method statement. Final inspection confirmed that the workmanship and quality meet the required standards and client requirements.



Project Name: ABC Bank 90th St.

Main Contractor: ABC Bank 90th St.

Scope of Work: Epoxy & Road Marking



Epoxy Flooring:

Epoxy flooring works were executed in accordance with the approved drawings and method statement after proper surface preparation. Final inspection confirmed that the epoxy finish meets the required quality, durability, and workmanship standards.

Road Marking:

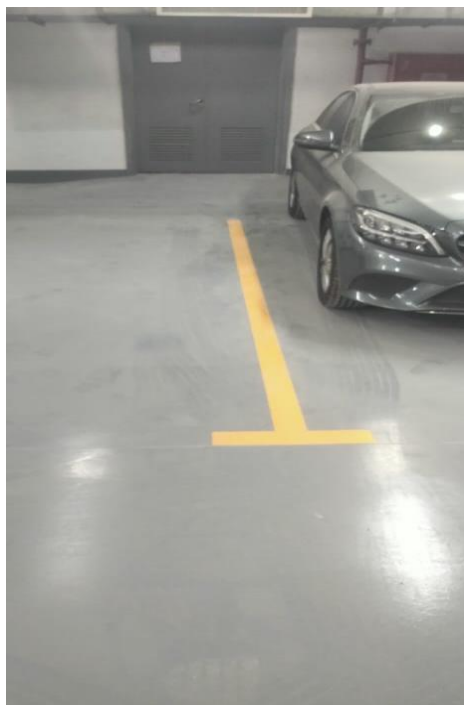
Road marking works were executed as per approved drawings and traffic requirements using approved materials. The completed markings were inspected and approved, meeting the required quality, visibility, and safety standards.



Project Name: Mercedes Kattamyeya

Main Contractor: AFAQ

Scope of Work: Epoxy, Repair & expansion Joint



Epoxy Flooring:

Epoxy works were applied using approved materials and manufacturer recommendations to achieve the specified finish. The applied system was tested and accepted, confirming compliance with project quality requirements.

Repair Works:

Repair works were carried out for defective areas using suitable repair materials and approved repair methods. All repaired areas were reinstated and approved, achieving the required strength and surface condition.

Expansion Joint:

Expansion joint works were executed using approved joint materials and installation techniques. The joints were properly aligned and sealed to allow movement and ensure long-term performance as required.



Project Name: Mercedes Pyramids Heights

Main Contractor: AFAQ

Scope of Work: Expansion Joint



Expansion joint works were executed at the designated locations in accordance with the approved drawings and specifications. The joint areas were properly prepared by cleaning, cutting, and ensuring correct alignment prior to installation. Approved expansion joint materials were installed to allow structural and thermal movements without causing cracking or distress. Joint sealing was carried out carefully to ensure watertightness and long-term durability under service conditions. The completed expansion joints were inspected and approved, confirming proper installation, functionality, and compliance with quality requirements.



Project Name: Lake View Appartement

Main Contractor: Corners

Scope of Work: Micro cement



Micro cement works were executed in strict compliance with the approved shop drawings, technical specifications, and manufacturer's data sheets.

The substrate was mechanically prepared, leveled, and treated with approved primers to achieve the required surface profile and adhesion strength.

Micro cement was applied in multiple controlled layers with specified thickness using specialized trowel techniques to ensure uniformity and seamless finish.

Intermediate curing, surface sanding, and final sealing treatments were carried out to enhance mechanical resistance and durability.

Final inspection and testing confirmed that the applied system meets the specified performance, aesthetic, and quality requirements.



Project Name: Taj Store- Downtown (New Capital)

Main Contractor: Corners

Scope of Work: Micro cement



Micro cement application was performed as an integrated flooring system in line with approved material specifications and execution procedures.

The base surface was assessed, corrected, and pre-treated to achieve the required flatness, moisture control, and bond compatibility.

The material was installed in sequenced coats using calibrated tools to control granulometry, thickness, and surface consistency.

Final surface treatments, including polishing and protective sealing layers, were applied to enhance abrasion resistance and service life.

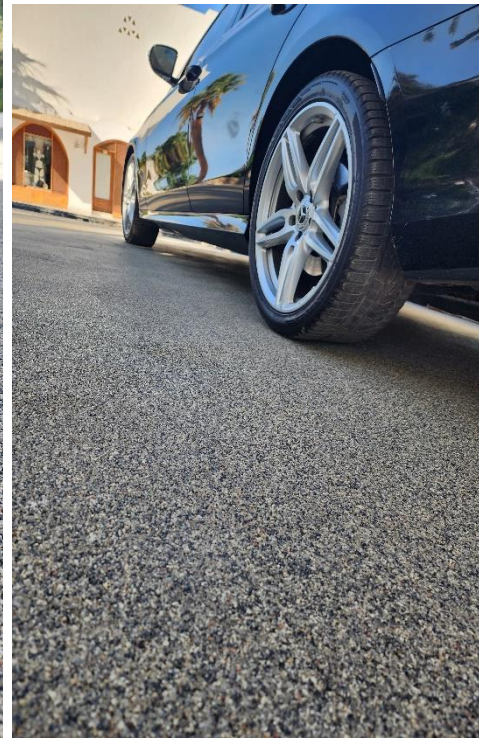
The completed system was evaluated and accepted, demonstrating full compliance with functional, structural, and visual performance criteria.



Project Name: Domina Coral Bay (Sharm EL-Sheikh)

Main Contractor: Domina Coral Bay (Owner)

Scope of Work: Stone Carpet



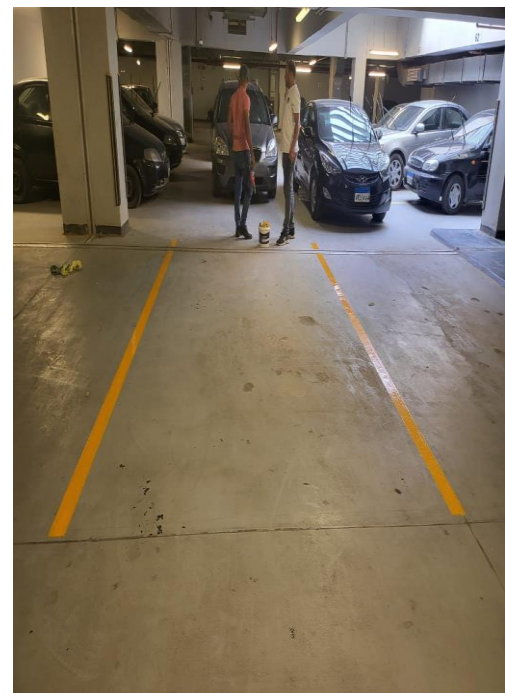
The **Stone Carpet** installation was executed with meticulous attention to surface preparation, ensuring complete cleaning and leveling of the substrate. A high-quality primer was applied to enhance adhesion between the substrate and the decorative aggregate layer. The selected natural stone chips were uniformly broadcast over a clear resin binder, carefully troweled and compacted to achieve a consistent thickness and texture. After curing, the surface was polished and sealed, providing both aesthetic appeal and long-lasting durability. The final finish met all specified quality standards, demonstrating excellent resistance to wear, weathering, and mechanical stress.



Project Name: Mixed Use (New Capital)

Main Contractor: ECIP

Scope of Work: Epoxy & Road Marking



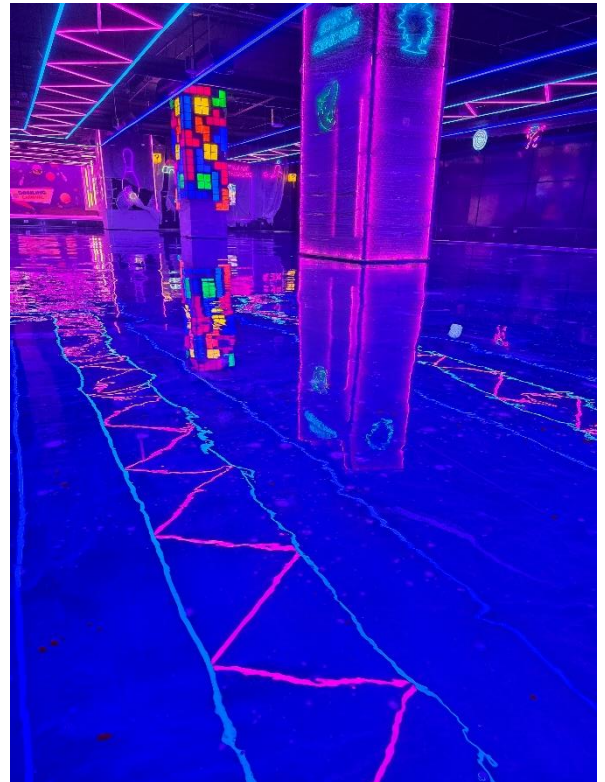
The **Epoxy flooring and Road Marking** works were carried out following strict adherence to the approved specifications. Initially, the concrete substrate was mechanically prepared and thoroughly cleaned to remove all contaminants, ensuring optimal adhesion. A two-component high-performance epoxy resin was then applied in multiple coats, allowing proper curing between layers to achieve uniform thickness and a defect-free surface. Road markings were executed using thermoplastic paint, precisely aligned with the approved layout and measured for accurate dimensions. All finished surfaces were inspected for adhesion, uniformity, and durability, confirming that the work fully complied with design requirements and quality standards.



Project Name: Bowling Center Ena Walks (New Cairo)

Main Contractor: Elite Vision

Scope of Work: Metallic Flooring



The **Metallic Flooring** was executed according to the approved design and project specifications, ensuring full compliance with technical standards. Surface preparation involved thorough grinding and cleaning of the substrate to remove dust, grease, and loose particles, followed by the application of a suitable primer to enhance adhesion. The metallic flooring system, consisting of polymer-modified metallic pigments mixed with high-performance resin, was applied in multiple layers with careful attention to uniform thickness and finish. Each layer was allowed to cure under controlled conditions to achieve optimal mechanical strength and chemical resistance. Final inspection confirmed a smooth, reflective surface free of defects, with excellent durability, resistance to abrasion, and complete adherence to the specified quality requirements.



Project Name: New Cairo Warehouse Storage

Main Contractor: Specialization

Scope of Work: Structure Slab Helicopter Finish



The **Structure Slab with Helicopter Finish** was executed strictly in accordance with the approved structural and architectural drawings. After completing concrete casting and ensuring proper curing, the surface was mechanically leveled to remove any irregularities or laitance. A skilled finishing team then applied the helicopter trowel technique, using high-speed rotary trowels to achieve a smooth, dense, and flat surface with uniform texture. Attention was given to maintaining precise alignment and level tolerance as per project specifications, while controlling surface moisture to prevent dusting and cracking. The finished slab underwent thorough inspection for flatness, surface density, and aesthetic quality, confirming full compliance with design standards and structural requirements.



Project Name: Central Bus Station

Main Contractor: Heliophos

Scope of Work: Polyaspartic Floor Coating



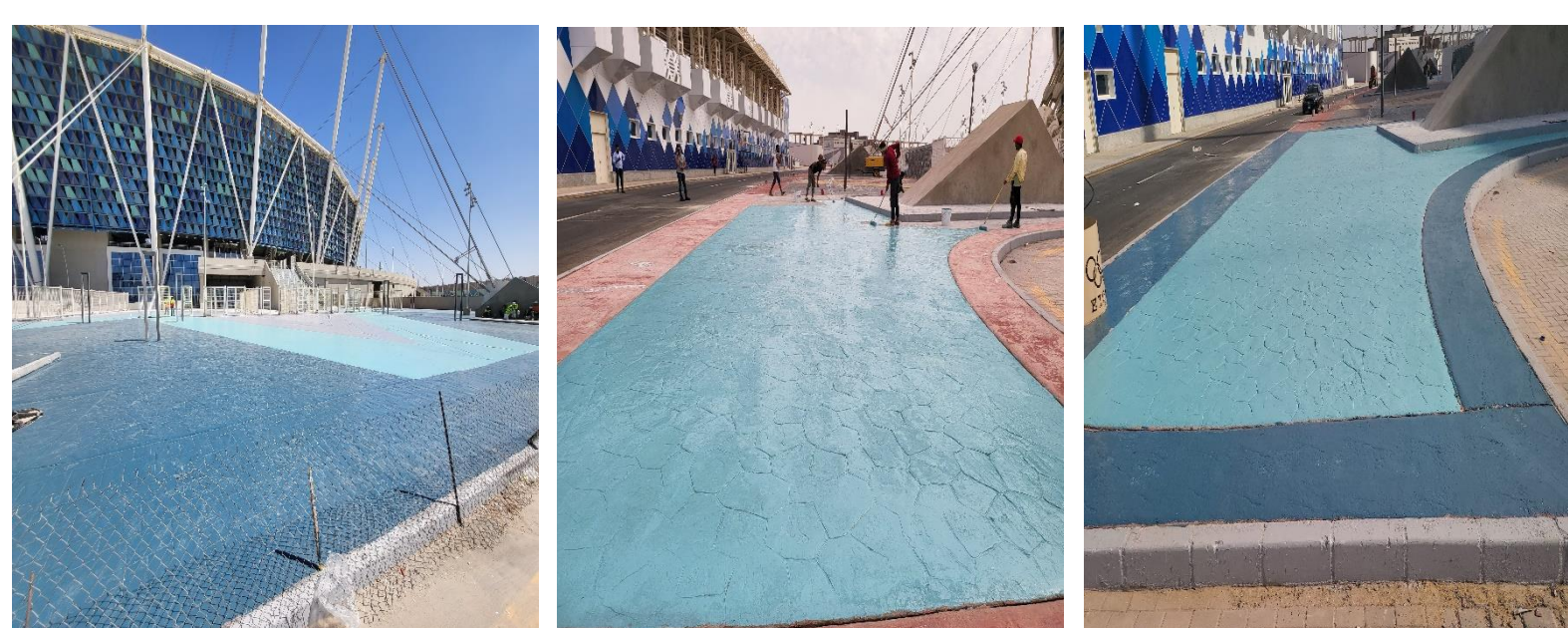
Work on the **Polyaspartic Floor Coating** was completed in accordance with the approved design documents and project specifications. The substrate underwent thorough surface preparation, including mechanical grinding and complete dust removal, to ensure proper adhesion of the coating system. A polyaspartic primer was applied first, followed by successive layers of polyaspartic topcoat, carefully leveled and spread to achieve a uniform and defect-free surface. Each layer was allowed to cure under controlled environmental conditions, ensuring optimal chemical resistance and mechanical durability. Final inspection confirmed the coating provided a seamless, high-performance finish, meeting all specified requirements for durability, aesthetics, and safety.



Project Name: Olympic City

Main Contractor: Heliophos

Scope of Work: Polyaspartic Floor Coating



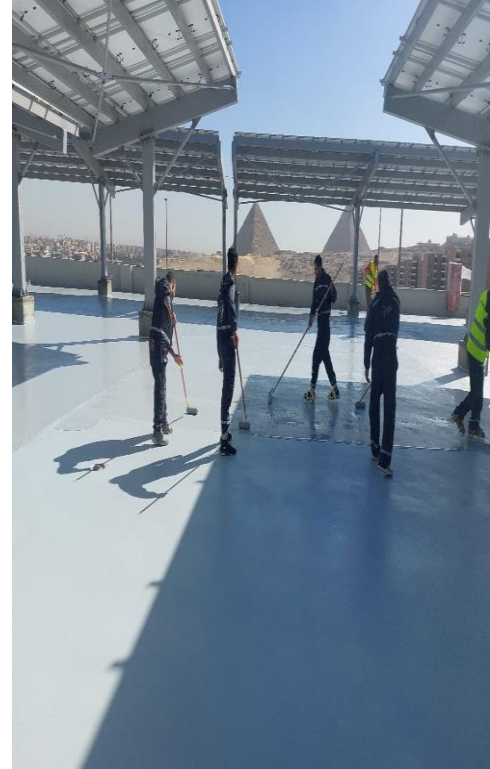
The installation of the **Polyaspartic Floor Coating** was carried out in full accordance with the approved specifications and design intent. Prior to coating, the concrete surface was meticulously prepared through grinding and vacuum cleaning to remove all impurities and ensure optimal bonding. A base layer of polyaspartic primer was applied, followed by successive applications of the polyaspartic topcoat, each layer carefully leveled to maintain consistent thickness and smooth finish. Curing was closely monitored to achieve maximum hardness, chemical resistance, and long-term durability. Post-application inspections confirmed the floor met all performance criteria, presenting a uniform, high-gloss, and resilient surface fully compliant with project standards.



Project Name: Grand Egyptian Museum

Main Contractor: Heliophos

Scope of Work: Polyaspartic Floor Coating



Execution of the **Polyaspartic Floor Coating** adhered strictly to the project's approved specifications and technical drawings. The concrete substrate was first prepared through intensive grinding and thorough cleaning to remove any contaminants, ensuring maximum adhesion of the coating system. A primer layer was applied and allowed to cure, after which multiple layers of polyaspartic topcoat were spread evenly using squeegees and rollers to achieve a uniform, smooth surface. Each layer was monitored and cured under controlled conditions to guarantee chemical resistance, mechanical strength, and long-term durability. Final inspection and quality verification confirmed that the surface was defect-free, fully compliant with design requirements, and delivered a high-performance, resilient, and visually consistent finish.



Project Name: Sodic VYE (Approx & Motamayez)

Main Contractor: LaFarge

Scope of Work: Broom Finish Concrete & Sand Blast



The concrete was cast and allowed to achieve sufficient strength before surface finishing. A broom was used systematically to create uniform ridges, enhancing slip resistance and texture consistency. Final verification confirmed an even finish, correct surface profile, and full compliance with project specifications.

Sand Blast

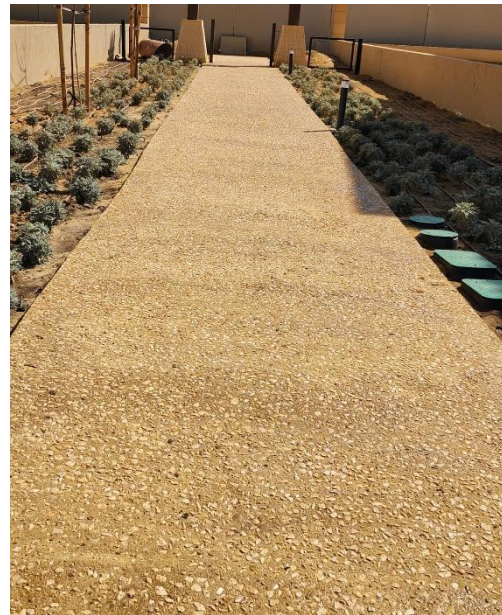
Following initial curing, the concrete surface underwent sand blasting to remove any laitance, loose particles, or minor imperfections. The process produced a consistent roughness and improved surface adhesion for subsequent treatments. Inspections confirmed uniform texture, clean surface, and readiness for further applications.



Project Name: City Gate

Main Contractor: LaFarge

Scope of Work: Exposed Aggregate & Sealant



Exposed Aggregate

The concrete surface was carefully prepared and poured with selected aggregates embedded throughout the mix. After initial curing, the top layer of cement paste was removed by controlled washing and brushing to reveal the decorative aggregates. Final inspection confirmed uniform exposure, aesthetic consistency, and full compliance with texture and slip-resistance requirements.

Sealant

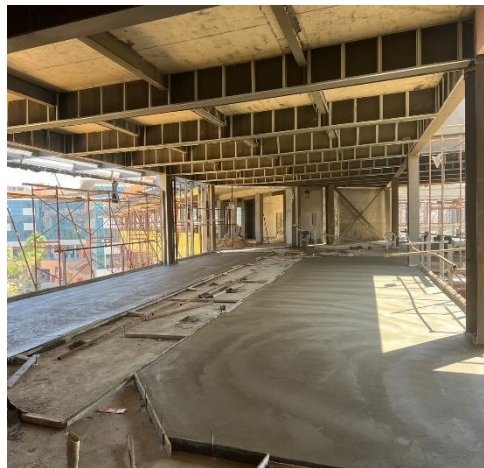
Joint surfaces were cleaned and primed before applying the specified sealant material. The sealant was applied uniformly, filling all gaps to accommodate structural movements and prevent water ingress. Post-application checks verified adhesion, flexibility, and compliance with project standards for durability and performance.



Project Name: GUC (Dental Collage)

Main Contractor: LaFarge

Scope of Work: Screed for Landscape & Roofs



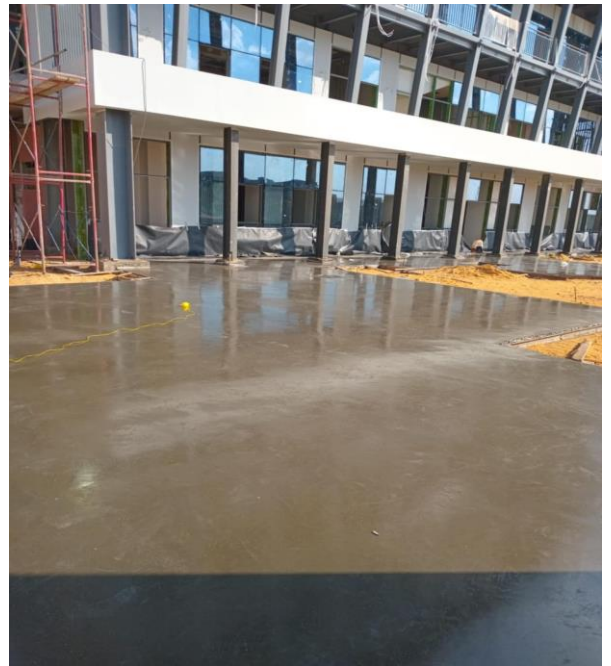
The substrate was thoroughly inspected and prepared to ensure a stable, clean, and level base prior to screed application. A high-quality screed mix was proportioned according to project specifications and applied in layers to achieve uniform thickness. Skilled operators used trowels and screeding tools to level and compact the surface, ensuring smoothness and structural integrity. After application, the screed was carefully cured under controlled conditions to prevent cracking and shrinkage. Final inspection verified flatness, uniform density, and full compliance with design and performance requirements, confirming readiness for subsequent flooring works.



Project Name: German International School

Main Contractor: LaFarge

Scope of Work: Screed for Landscape & Roofs



The underlying surface is thoroughly examined and prepared, removing all loose particles, dust, and impurities to ensure proper bonding. A carefully measured screed mixture is combined in accordance with project requirements, achieving optimal consistency and strength. The mixture is spread evenly across the prepared area using specialized tools to obtain a uniform layer. Mechanical and manual techniques are employed to compact and level the screed, ensuring a smooth, defect-free finish. After application, the surface is allowed to cure under controlled conditions, with a final assessment confirming flatness, uniform density, and readiness for subsequent finishes.



Project Name: Medcon (R5)

Main Contractor: LaFarge

Scope of Work: Stamped Concrete



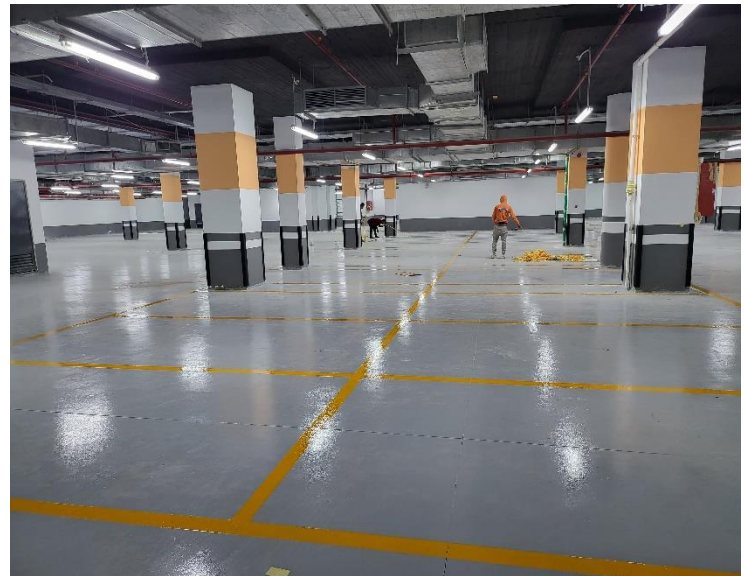
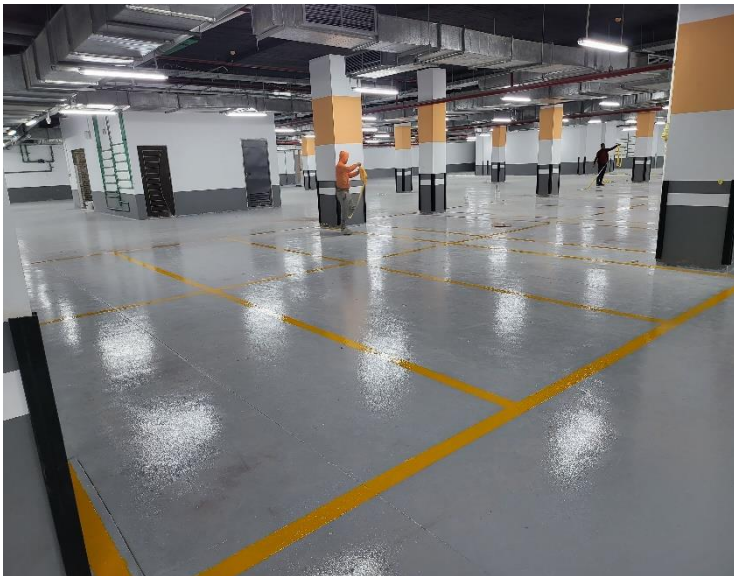
The concrete substrate was first poured and allowed to reach the specified strength prior to surface treatment. Release agents were applied uniformly to prevent sticking during stamping, while the surface remained workable. Custom stamps were pressed into the wet concrete to create the desired pattern, ensuring consistent depth and alignment across the area. After stamping, the surface was cured under controlled conditions to prevent cracking and to maintain texture clarity. The finished surface was inspected for pattern uniformity, color consistency, and adherence to design specifications, confirming high-quality aesthetic and structural performance.



Project Name: Ritzy Mall (Sheikh Zayed)

Main Contractor: LaFarge

Scope of Work: S.O.G , Epoxy, Sealant And Parking Accessories



Slab on Grade

The concrete slab was poured over a well-compacted subgrade with proper reinforcement placement, ensuring structural stability. The surface was leveled and cured to meet strength and durability requirements.

Epoxy

The substrate was thoroughly prepared and primed before multiple layers of epoxy were applied. Each layer cured under controlled conditions, producing a uniform, durable, and smooth surface.

Sealant

Joint surfaces were cleaned and primed, then filled with high-performance sealant to accommodate structural movement. The applied sealant was inspected for adhesion, flexibility, and uniformity.

Parking Accessories – Rubber

Rubber parking components, including wheel stops and protective barriers, were positioned according to approved layouts. All items were securely anchored and verified for alignment and functionality.



Project Name: Tanza Magic lang

Main Contractor: LaFarge

Scope of Work: Colored Concrete



Concrete placement was performed on a properly prepared and reinforced substrate, adhering strictly to design requirements. Color pigments were blended into the mix with precise measurement to achieve uniform hue throughout the slab. The surface was then screeded, floated, and finished to obtain the intended texture and levelness. Curing processes were carefully controlled to prevent shrinkage and maintain the color's consistency. Final verification confirmed a smooth, evenly colored surface meeting both aesthetic and structural specifications.



Project Name: The Marq

Main Contractor: LaFarge

Scope of Work: Slab On Grade

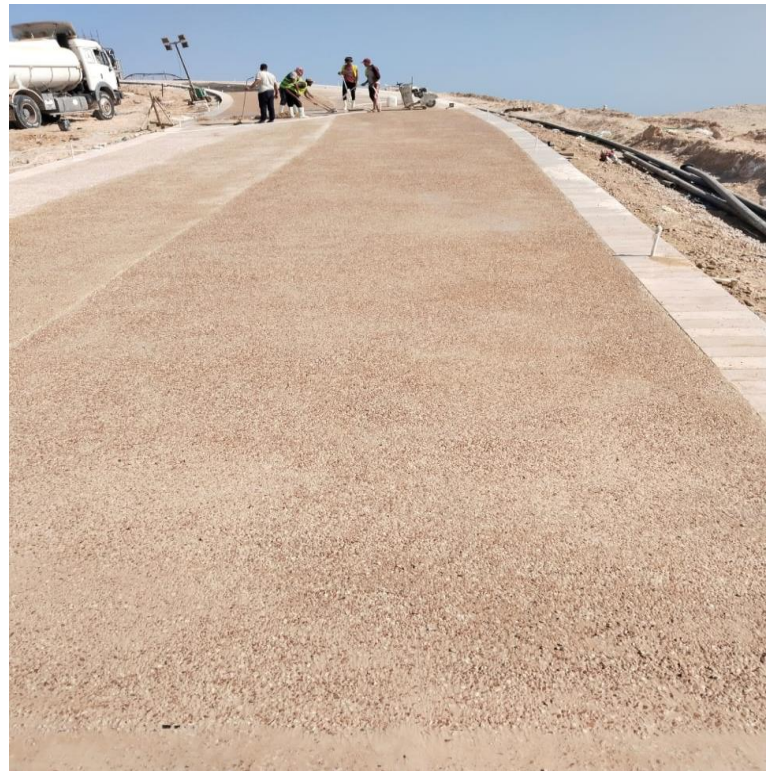
Construction of the slab on grade was carried out over a properly compacted and leveled subbase in accordance with approved drawings. Reinforcement, vapor barrier, and edge details were installed and inspected prior to concrete placement. Concrete was poured continuously and spread evenly to achieve the specified thickness and structural continuity. Surface finishing and joint formation were executed as per design requirements to control shrinkage and cracking. Final inspection confirmed compliance with strength, level tolerances, and overall construction quality requirements.



Project Name: Raas AL-Hekma

Main Contractor: LaFarge

Scope of Work: Exposed Aggregate Concrete



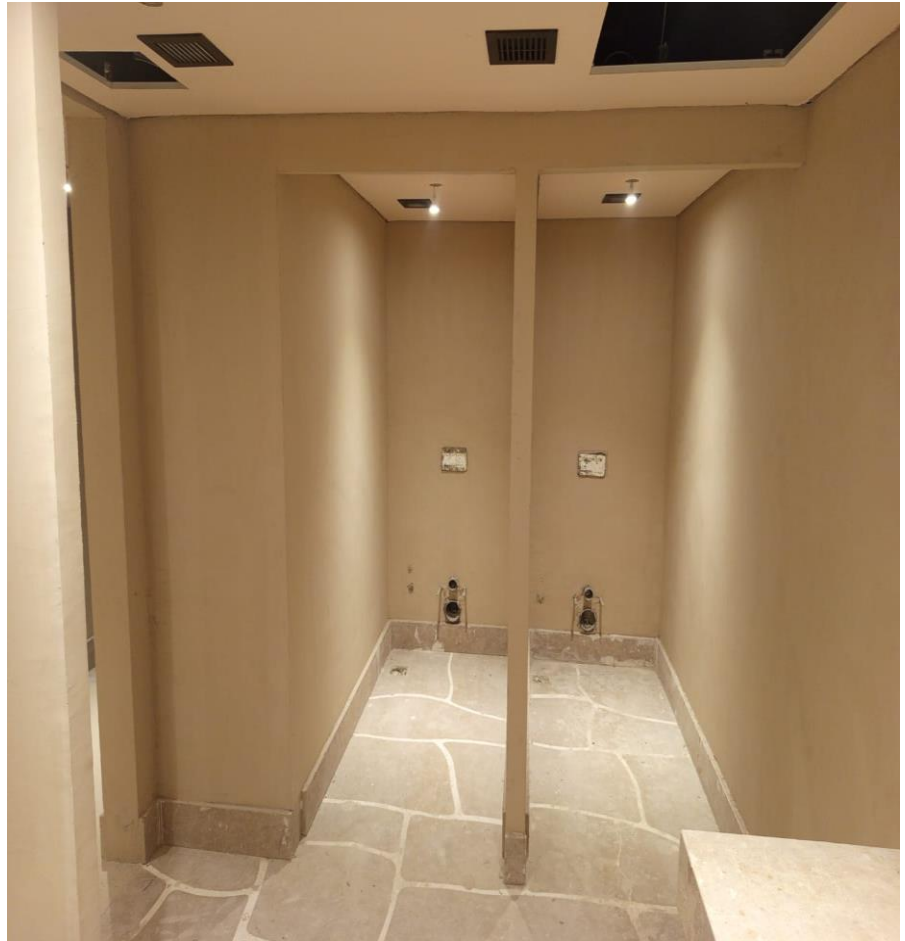
Execution of the exposed aggregate concrete was completed using a specially designed concrete mix incorporating selected natural aggregates. Immediately after placement and initial setting, a surface retarder was applied to delay the hardening of the top cement layer. Once the concrete reached the appropriate strength, the surface was carefully washed and brushed to expose the aggregates to the required depth. The area was then cleaned and allowed to cure under controlled conditions to enhance durability and surface performance. Final inspection confirmed uniform aggregate exposure, consistent appearance, and compliance with approved technical and aesthetic requirements.



Project Name: Garden 8

Main Contractor: Lemon Tree

Scope of Work: Mirco Cement



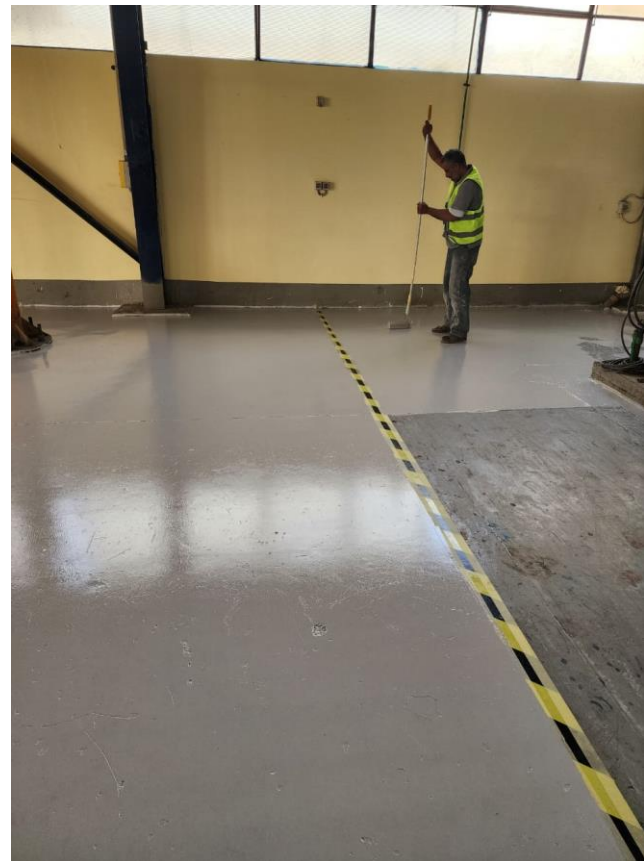
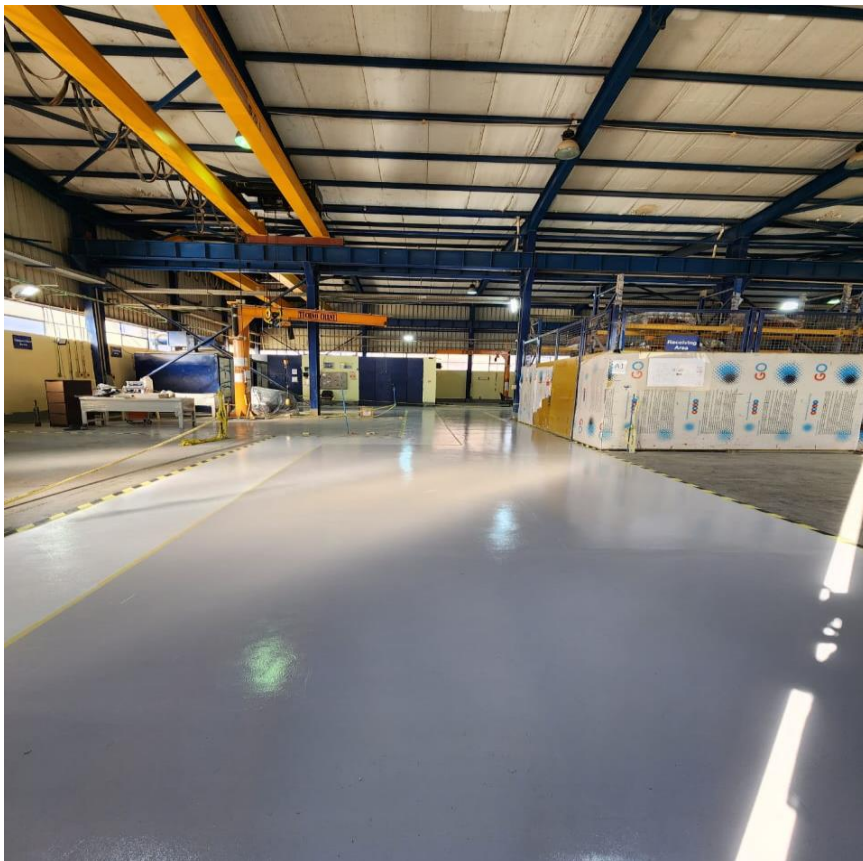
Application of the micro cement system was carried out on a structurally sound and properly prepared substrate in accordance with approved specifications. The surface was mechanically treated, repaired where necessary, and primed to achieve the required bonding conditions. Micro cement layers were applied manually in successive coats with controlled thickness to ensure uniform coverage and seamless appearance. Intermediate sanding and cleaning were performed between coats to enhance surface consistency and adhesion. Final sealing and inspection confirmed the required surface strength, visual quality, and full compliance with project performance requirements.



Project Name: Tharwa Breda Factory

Main Contractor: Mitkees

Scope of Work: Repair & Epoxy



Repair Subsurface

Areas requiring repair were carefully assessed and all unsound concrete was removed to reach a stable base. Repair materials were placed and compacted to reinstate the original profile and structural capacity. The treated areas were cured and inspected, confirming adequate bonding, strength, and surface uniformity.

Epoxy

The epoxy system was installed over a properly prepared surface following the approved technical data and application procedures. Coating layers were applied in sequence to achieve the required build-up and surface performance. Final inspection verified uniform finish, strong adhesion, and compliance with project quality standards.



Project Name: Moon Yard Mall (Sherouk City)

Main Contractor: Moon yard (owner)

Scope of Work: Expansion Joint

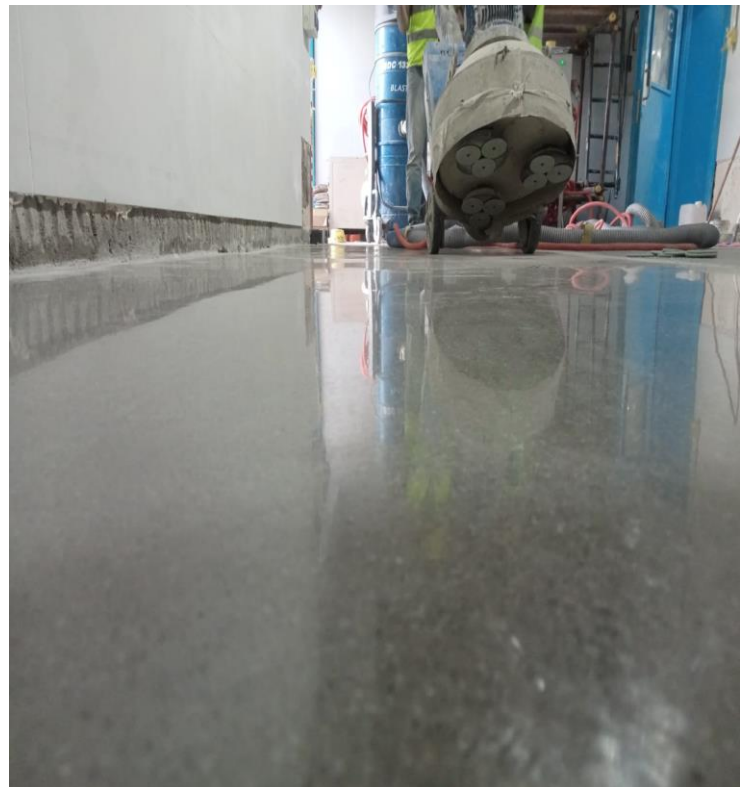
Expansion joint works were implemented following the approved layouts and coordination drawings. Joint gaps were accurately cut and prepared to achieve the required width, depth, and alignment. Prefabricated joint materials were installed and secured to allow controlled structural movement. All joint interfaces were sealed using approved flexible sealants to ensure durability and moisture resistance. Post-execution inspection verified performance, alignment, and compliance with project specifications.



Project Name: P&G

Main Contractor: P&G (owner)

Scope of Work: Cement Terazzo



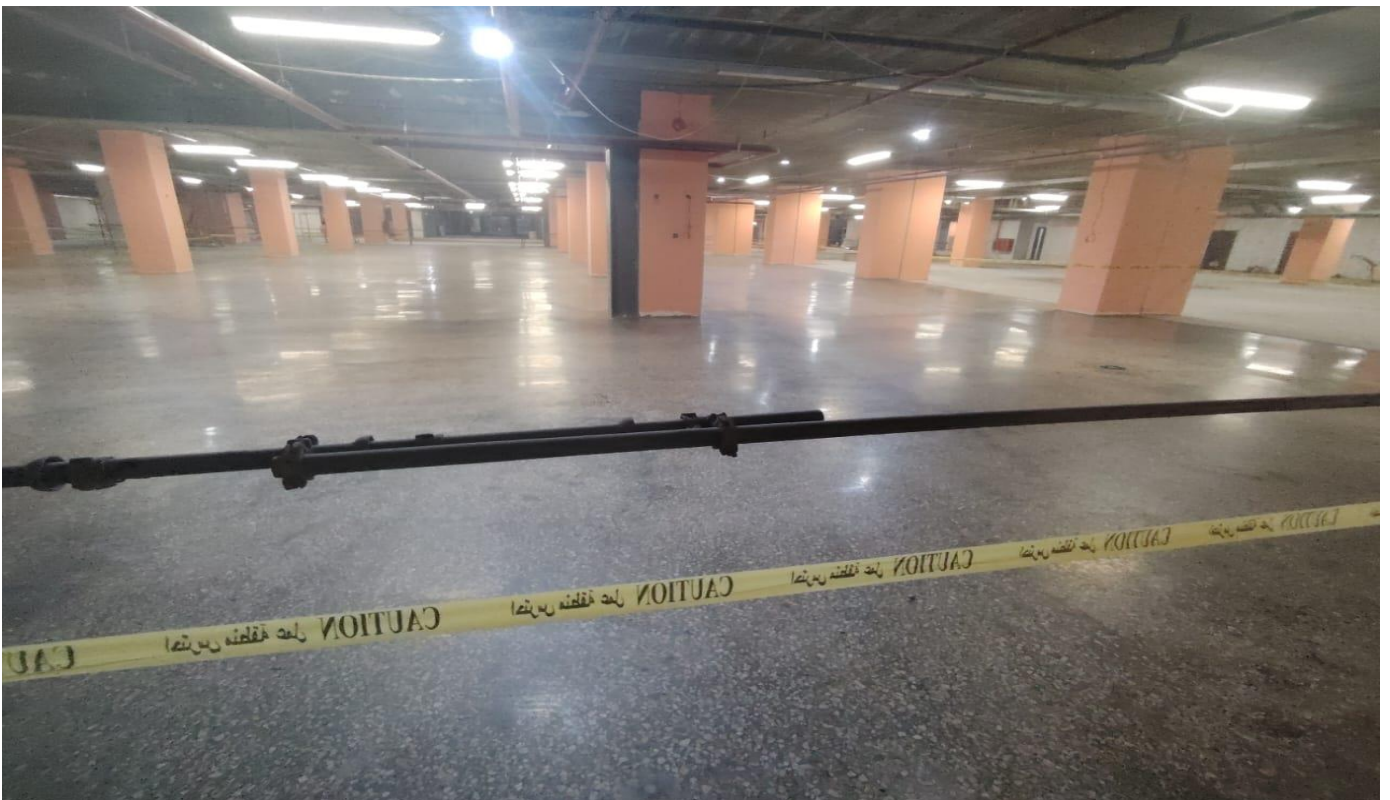
The cement terrazzo floor was constructed over a fully prepared and leveled base in accordance with approved finishing details. Selected aggregates and cement binder were mixed and placed uniformly to achieve the specified thickness and composition. After initial curing, the surface was ground progressively to expose the aggregates and achieve a smooth, even finish. Polishing works were carried out using suitable machines to enhance appearance and surface performance. Final assessment confirmed uniform exposure, adequate strength, and full compliance with aesthetic and technical project requirements.



Project Name: Park Street

Main Contractor: Park Street (Owner)

Scope of Work: Polished Concrete



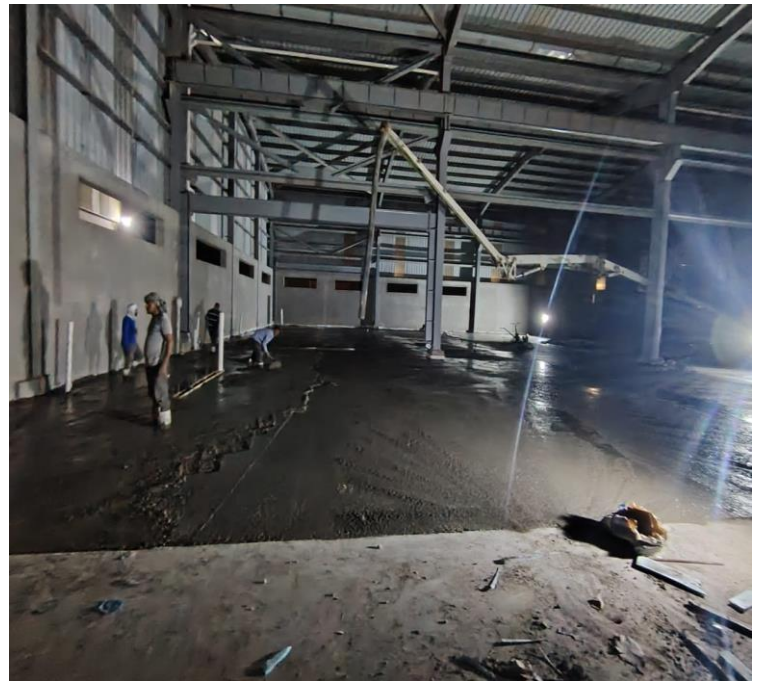
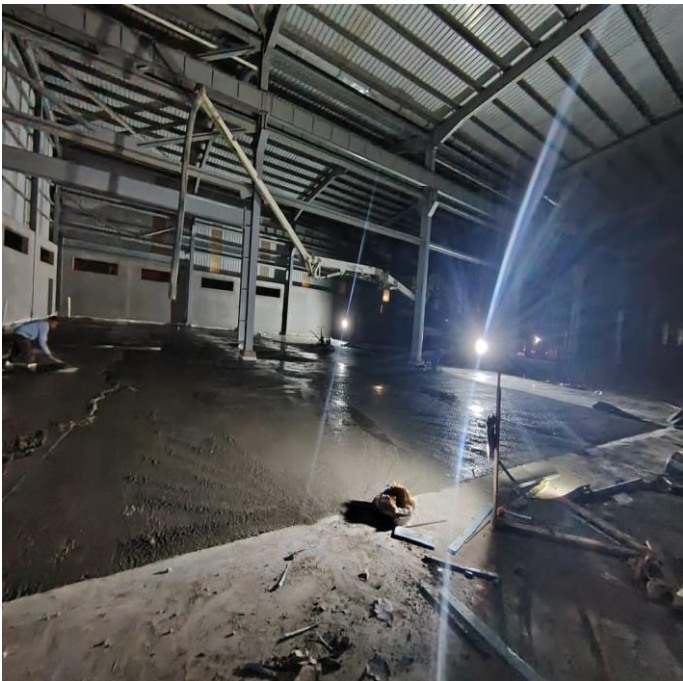
Polished concrete works were completed on structurally sound slabs in accordance with the approved finishing drawings. The surface was progressively treated using multi-stage grinding operations to remove surface imperfections and achieve the required smoothness. Chemical hardeners were applied to densify the concrete and enhance abrasion resistance. Subsequent polishing stages were carried out to obtain the specified sheen level and surface clarity. Final inspection confirmed uniform appearance, high surface durability, and compliance with performance and aesthetic project requirements.



Project Name: Nice Air Factory (10th of Ramadan)

Main Contractor: El-Ezz Development

Scope of Work: Slab On Grade (Helicopter Finishing)



Construction of the slab on grade was completed over a properly prepared and compacted base in line with the approved structural details. Concrete placement was carried out continuously to ensure uniform thickness and proper integration with reinforcement. Initial surface leveling was followed by mechanical helicopter troweling to achieve a dense, smooth, and even finish. Finishing operations were carefully timed to control surface moisture and prevent defects such as cracking or dusting. Final inspection verified floor level tolerances, surface hardness, and full compliance with project quality standards.



Project Name: Living Inn (New Cairo)

Main Contractor: LaFarge

Scope of Work: Slab On Grade for Parking Areas (Helicopter Finishing)



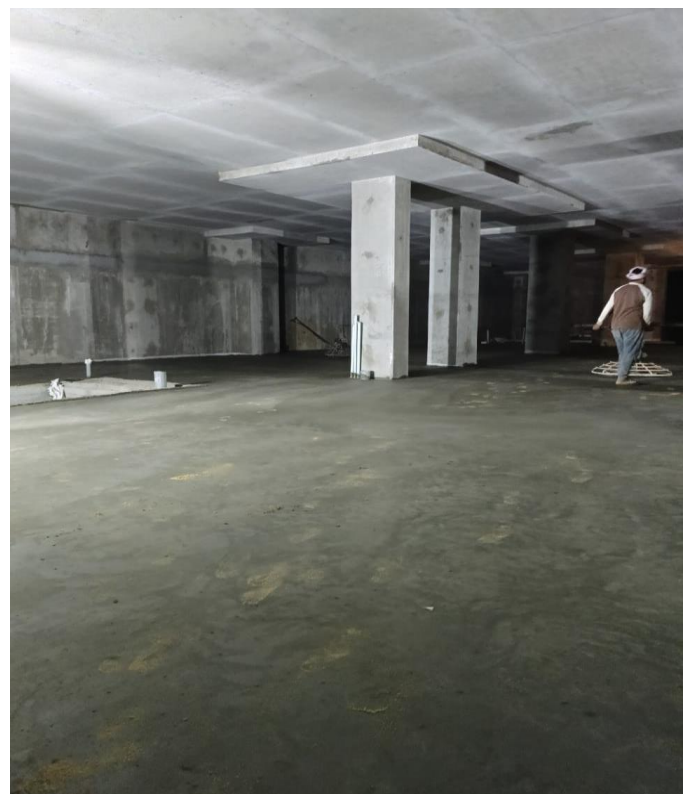
The concrete slab was poured over a fully prepared and compacted subgrade, ensuring proper reinforcement placement and substrate stability. Immediately after reaching initial set, the surface was leveled and smoothed using helicopter trowels to achieve uniform flatness and texture. Skilled operators maintained consistent movement patterns to prevent surface imperfections and ensure density across the slab. Curing procedures were closely monitored under controlled conditions to minimize cracking and shrinkage while preserving surface integrity. Final inspection confirmed a high-quality finish with precise flatness, even texture, and compliance with all structural and design specifications.



Project Name: Grey Mall (New Cairo)

Main Contractor: LaFarge

Scope of Work: Slab On Grade for Parking Areas (Helicopter Finishing)



The parking slab was constructed over a meticulously prepared and compacted subgrade to ensure stability and uniform load distribution. Reinforcing steel was placed according to the structural drawings to enhance strength and prevent cracking under heavy loads. Concrete was poured in sections, carefully leveled, and screeded to achieve uniform thickness and a smooth surface profile. Surface finishing included detailing for parking slot edges and texture optimization for slip resistance. Controlled curing measures were implemented, and final inspections confirmed the slab's flatness, alignment, durability, and full compliance with project specifications.



Project Name: The Groove (Sokhna)

Main Contractor: Dar Misr Development

Scope of Work: Exposed aggregate, S.O.G & epoxy For Beach Front Pool Decks



Exposed Aggregate

Concrete was poured with selected aggregates embedded throughout the mix to achieve the desired decorative effect. The surface was washed and brushed after initial setting to expose the aggregates evenly. Inspection verified consistent texture, slip resistance, and aesthetic quality across the deck.

Slab On Grade

The concrete slab was placed over a fully prepared and compacted subgrade with appropriate reinforcement for structural stability. The surface was carefully leveled and finished to ensure uniform thickness and smoothness. Final inspection confirmed proper alignment, flatness, and readiness for further finishing treatments.

Epoxy

The substrate was cleaned, primed, and prepared to ensure maximum adhesion of the epoxy coating. Multiple layers of epoxy were applied, each allowed to cure under controlled conditions for durability. The final finish was smooth, uniform, and resistant to abrasion and environmental exposure.



Project Name: Eclyps Mall (South 90th)

Main Contractor: Menassat Development

Scope of Work: Anti Carbonation, Joints, Epoxy & Road Marking

Anti-Carbonation – Ceiling and Walls

The concrete surfaces were cleaned and prepared to remove dust, laitance, and loose particles. Anti-carbonation coating was applied uniformly to protect the substrate from CO₂ penetration and corrosion. Final inspection confirmed full coverage, adhesion, and compliance with protective performance standards.

Joints

All structural and expansion joints were cleaned and primed prior to installation of sealant materials. Sealants were applied to accommodate movements while preventing water ingress. Post-application checks confirmed alignment, flexibility, and proper adhesion.

Epoxy

The prepared substrate was primed before applying multiple layers of epoxy coating to achieve a durable, smooth, and chemical-resistant surface. Each layer was allowed to cure under controlled conditions. The finished surface passed inspection for uniformity, adhesion, and mechanical performance.

Road Marking

The surface was cleaned and leveled prior to painting. Thermoplastic road marking paint was applied according to approved layouts, ensuring accurate dimensions and alignment. Final inspection confirmed adhesion, visibility, and compliance with traffic safety standards.

CONTACT US



Contracting and Trading



+20 100 034 9594
+2025361549



Amostafa@floormastereg.com



FloorMastereg.com



110 Mostasmeren-
New Cairo